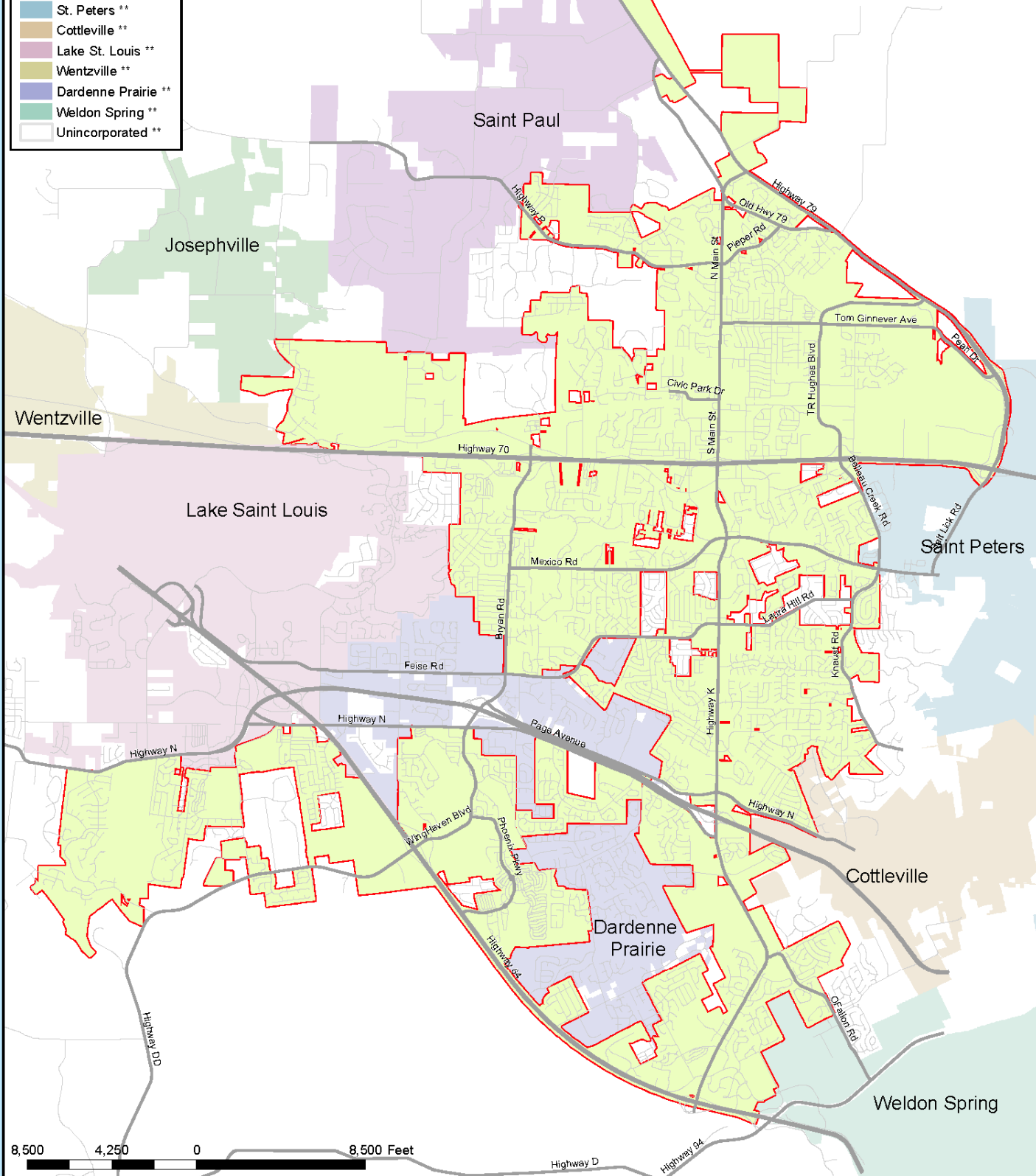


Legend

- O'Fallon
- Josephville **
- St. Paul **
- St. Peters **
- Cottleville **
- Lake St. Louis **
- Wentzville **
- Dardenne Prairie **
- Weldon Spring **
- Unincorporated **

** Information provided by the St. Charles County GIS as of October 2014. Further information is available by contacting: Information Systems Department, 201 N. Second St., St. Charles, MO 63301 Telephone: (636) 949-7414 Fax: (636) 949-7493



8,500 4,250 0 8,500 Feet



Planning & Development
Geographic Information Systems
O'Fallon, Missouri

2. O'Fallon City Limits

Base map information current through Ordinance #6043
Printed: 02/05/2015



Map was created by the City of O'Fallon Community Development GIS and compiled from various sources including the St. Charles County GIS Dept.